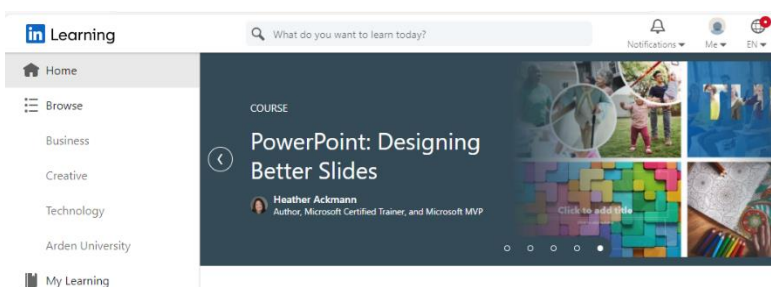
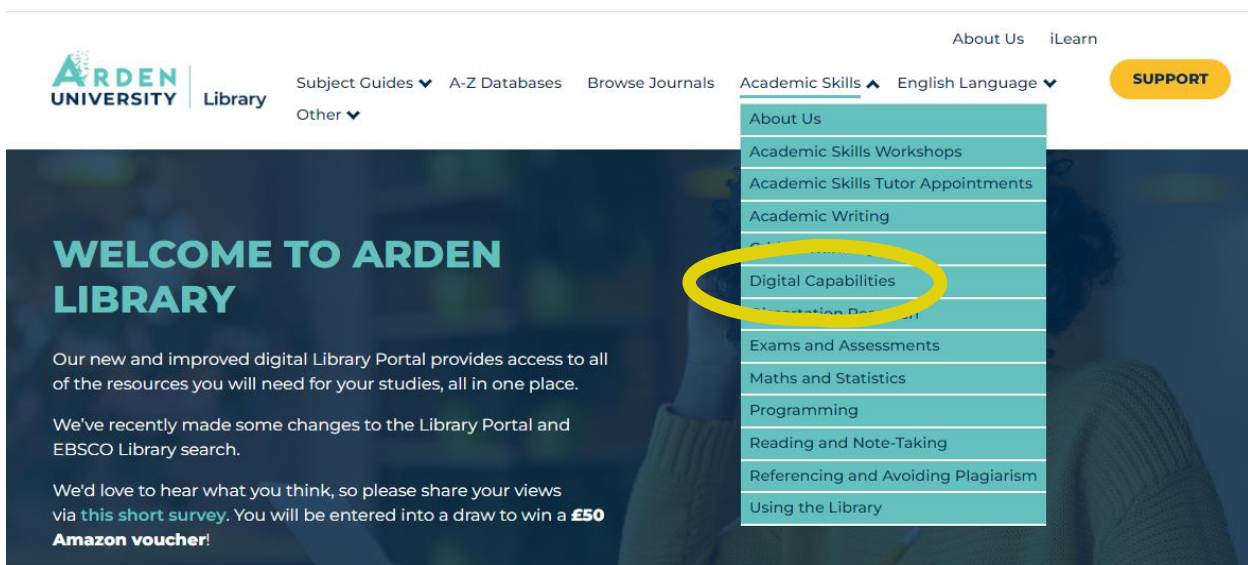


Improve your skills with LinkedIn Learning



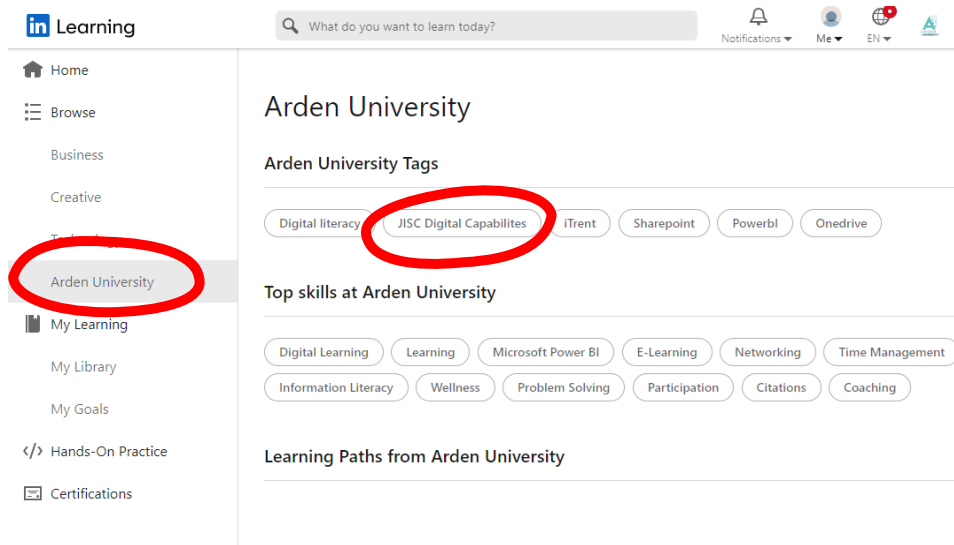
How to access LinkedIn Learning from the Library Portal



The first time you use it you will need to set up your account. You should then see your homepage.

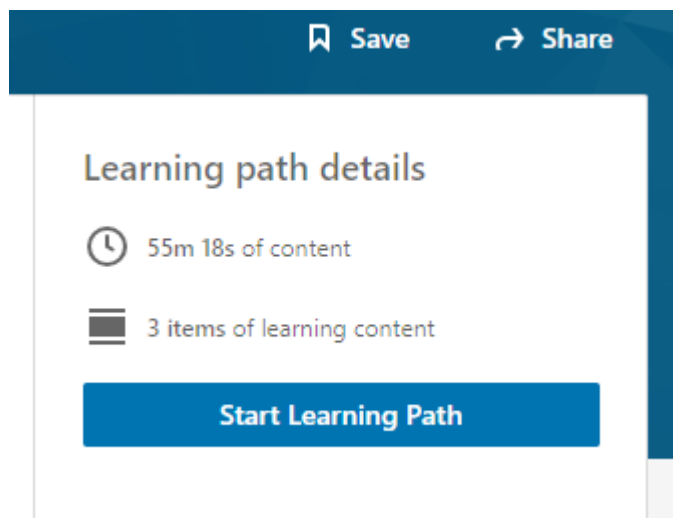
Learning Pathways

There are pathways you can follow which include courses that have been chosen for Arden University students. Click on the tags to find the pathways.



The screenshot shows the LinkedIn Learning interface. On the left sidebar, 'Arden University' is highlighted with a red circle. In the main content area, under 'Arden University Tags', the tag 'JISC Digital Capabilities' is circled in red. Below this, 'Top skills at Arden University' lists various skills like Digital Learning, Learning, Microsoft Power BI, E-Learning, Networking, Time Management, Information Literacy, Wellness, Problem Solving, Participation, Citations, and Coaching. At the bottom, there is a section for 'Learning Paths from Arden University'.

You can start the course or save the Learning Path to your library.



The screenshot shows a 'Learning path details' card. At the top right, there are 'Save' and 'Share' buttons. The card displays '55m 18s of content' and '3 items of learning content'. A prominent blue button at the bottom says 'Start Learning Path'.

| | | | | |
|---|---|--|---|---|
|  |  |  |  |  |
| <p>Library Portal https://library.arden.ac.uk/</p> | <p>Study Skills on iLearn https://moodle.bl.rdi.co.uk/course/view.php?id=921&section=1</p> | <p>Emails Study-skills@arden.ac.uk and libraries@arden.ac.uk</p> | <p>Blog https://library.arden.ac.uk/library-blog</p> | <p>Twitter @LibraryArden</p> |